

# PVC 护套系列

## PVC sleeve series

>



# 直形护套系列

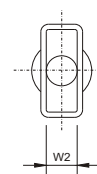
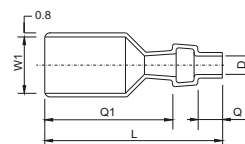
## RULER SLEEVE SERIES



### 110 直形护套



型号 (Part No.)	适用电线范围 (Wire Range)		尺寸 (Size)(mm)						Q'ty/reel	备注 Note
	mm <sup>2</sup>	AWG#	W1	W2	D	L	Q1	Q2		
SR110-25-20	0.3-0.75	22-18	3.8	2.2	2.5	20	12.0	5.0	2000PCS	
SR110-25-21	0.3-0.75	22-18	3.8	2.2	2.5	21	13.0	5.0	2000PCS	
SR110-25-22	0.3-0.75	22-18	3.8	2.2	2.5	21	14.0	5.0	2000PCS	
SR110-25-23	0.3-0.75	22-18	3.8	2.2	2.5	23	15.0	5.0	2000PCS	
SR110-25-24	0.3-0.75	22-18	3.8	2.2	2.5	24	16.0	5.0	2000PCS	
SR110-30-20	0.75-1.25	18-16	3.8	2.2	3.0	20	12.0	5.0	2000PCS	
SR110-30-21	0.75-1.5	18-16	3.8	2.2	3.0	21	13.0	5.0	2000PCS	
SR110-30-22	0.75-1.5	18-16	3.8	2.2	3.0	22	14.0	5.0	2000PCS	
SR110-30-23	0.75-1.5	18-16	3.8	2.2	3.0	23	15.0	5.0	2000PCS	
SR110-37-20	14-12 or 20+20		3.8	2.2	3.7	20	12.0	5.0	2000PCS	



### 187 直形护套

型号 (Part No.)	适用电线范围 (Wire Range)		尺寸 (Size)(mm)						Q'ty/reel	备注 Note
	mm <sup>2</sup>	AWG#	W1	W2	D	L	Q1	Q2		
SR187-25-21	0.3-0.75	22-18	5.8	2.3	2.5	21	13.0	5.0	2000PCS	
SR187-25-22	0.3-0.75	22-18	5.8	2.3	2.5	22	14.0	5.0	2000PCS	允
SR187-25-23	0.3-0.75	22-18	5.8	2.3	2.5	23	15.0	5.0	2000PCS	
SR187-25-24	0.3-0.75	22-18	5.8	2.3	2.5	24	16.0	5.0	2000PCS	
SR187-25-25	0.3-0.75	22-18	5.8	2.3	2.5	25	17.0	5.0	2000PCS	
SR187-28-22	0.5-0.75	20-18	5.8	2.3	2.8	22	14.0	5.0	2000PCS	允
SR187-28-23	0.5-0.75	20-18	5.8	2.3	2.8	23	15.0	5.0	2000PCS	
SR187-28-24	0.5-0.75	20-18	5.8	2.3	2.8	24	16.0	5.0	2000PCS	
SR187-28-25	0.5-0.75	20-18	5.8	2.3	2.8	25	17.0	5.0	2000PCS	
SR187-28-35	0.5-0.75	20-18	5.8	2.3	2.8	35	27.0	5.0	2000PCS	
SR187-30-22	0.75-1.5	18-16	5.8	2.3	3.0	22	14.0	5.0	2000PCS	
SR187-30-20	0.75-1.5	18-16	5.8	2.3	3.0	20	12.0	5.0	2000PCS	允
SR187-30-24	0.75-1.5	18-16	5.8	2.3	3.0	24	16.0	5.0	2000PCS	
SR187-30-23.5	0.75-1.5	18-16	5.8	2.3	3.0	23.5	15.5	5.0	2000PCS	
SR187-32-22	0.75-1.5	18-16	5.8	2.3	3.2	22	14.0	5.0	2000PCS	允
SR187-32-20	0.75-1.5	18-16	5.8	2.3	3.2	20	12.0	5.0	2000PCS	
SR187-35-22	1.5-2.5	16-14	5.8	2.3	3.5	22	14.0	5.0	2000PCS	允
SR187-35-20	1.5-2.5	16-14	5.8	2.3	3.5	20	12.0	5.0	2000PCS	
SR187-35-25	1.5-2.5	16-14	5.8	2.3	3.5	25	17.0	5.0	2000PCS	
SR187-35-27	1.5-2.5	16-14	5.8	2.3	3.5	27	19.0	5.0	2000PCS	
SR187-40-22	14-12 or 20+20		5.8	2.3	4.0	22	14.0	5.0	2000PCS	允
SR187-40-23.5	14-12 or 20+20		5.8	2.3	4.0	23.5	15.5	5.0	2000PCS	
SR187-40-24	14-12 or 20+20		5.8	2.3	4.0	24	16.0	5.0	2000PCS	
SR187-40-27	14-12 or 20+20		5.8	2.3	4.0	27	17.0	5.0	2000PCS	
SR187-45-22	14-10 or 20+20		5.8	2.3	4.5	22	14.0	5.0	2000PCS	
SR187-45-25	14-10 or 20+20		5.8	2.3	4.5	25	17.0	5.0	2000PCS	

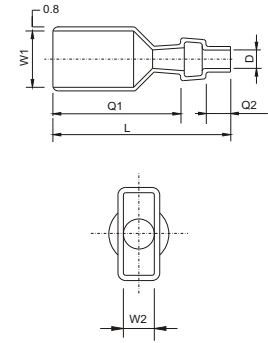


205 直形护套



型号 (Part No.)	适用电线范围 (Wire Range)		尺寸 (Size)(mm)						Q' ty/reel	备注 Note
	mm <sup>2</sup>	AWG#	W1	W2	D	L	Q1	Q2		
SR205-25-23	0.3-0.75	22-18	6.3	3.0	2.5	23	15	5.0	2000PCS	
SR205-30-21	0.75-1.5	18-16	6.3	3.0	3.0	21	13	5.0	2000PCS	
SR205-30-23	0.75-1.5	18-16	6.3	3.0	3.0	23	15	5.0	2000PCS	
SR205-30-25	0.75-1.5	18-16	6.3	3.0	3.0	25	17	5.0	2000PCS	

250 直形护套



型号 (Part No.)	适用电线范围 (Wire Range)		尺寸 (Size)(mm)						Q' ty/reel	备注 Note
	mm <sup>2</sup>	AWG#	W1	W2	D	L	Q1	Q2		
SR250-25-18	0.3-0.75	22-18	7.8	3.3	2.5	18	10	5.0	2000PCS	
SR250-25-25	0.3-0.75	22-18	7.8	3.3	2.5	25	17	5.0	2000PCS	RU
SR250-25-26	0.3-0.75	22-18	7.8	3.3	2.5	26	18	5.0	2000PCS	
SR250-25-27	0.3-0.75	22-18	7.8	3.3	2.5	27	19	5.0	2000PCS	
SR250-28-24	0.5-0.75	20-18	7.8	3.3	2.8	24	16	5.0	2000PCS	
SR250-28-25	0.5-0.75	20-18	7.8	3.3	2.8	25	17	5.0	2000PCS	RU
SR250-28-26	0.5-0.75	20-18	7.8	3.3	2.8	26	19	5.0	2000PCS	
SR250-30-25	0.75-1.5	18-16	7.8	3.3	3.0	25	17	5.0	2000PCS	RU
SR250-30-26	0.75-1.5	18-16	7.8	3.3	3.0	26	18	5.0	2000PCS	
SR250-30-27	0.75-1.5	18-16	7.8	3.3	3.0	27	19	5.0	2000PCS	
SR250-30-28	0.75-1.5	18-16	7.8	3.3	3.0	28	20	5.0	2000PCS	
SR250-30-29	0.75-1.5	18-16	7.8	3.3	3.0	29	21	5.0	2000PCS	
SR250-32-25	0.75-1.5	18-16	7.8	3.3	3.2	25	17	5.0	2000PCS	
SR250-35-25	1.5-2.5	16-14	7.8	3.3	3.5	25	17	5.0	2000PCS	RU
SR250-37-25	14-12 or 20+20		7.8	3.3	3.7	25	17	5.0	2000PCS	RU
SR250-40-25	14-12 or 20+18		7.8	3.3	4.0	25	17	5.0	2000PCS	RU
SR250-45-25	12-10 or 18+18		7.8	3.3	4.5	25	17	5.0	2000PCS	
SR250-50-25	16+16 or 18+16		7.8	3.3	5.0	25	17	5.0	2000PCS	
SR250-52-25	16+16 or 18+14		7.8	3.3	5.2	25	17	5.0	2000PCS	



187 旗形护套



型号 (Part No.)	图号 Type	适用电线范围 (Wire Range)		尺寸 (Size)(mm)					Q' ty/reel	备注 Note
		mm <sup>2</sup>	AWG#	D	W1	W2	L1	L2		
SF187-30-12	A	0.5-1.5	20-16	3.0	5.8	2.5	12.0	14.0	2000PCS	
SF187-30-14		0.5-1.5	20-16	3.0	5.8	2.5	14.0	14.0	2000PCS	RU
SF187-35-13		0.75-2.5	18-14	3.5	5.8	2.5	14.0	14.0	2000PCS	
SF187-35-16		0.75-2.5	18-14	3.5	5.8	2.5	16.0	14.0	2000PCS	
SF187-40-14		14-12 or 20+18		4.0	5.8	2.5	14.0	14.0	2000PCS	

型号 (Part No.)	图号 Type	适用电线范围 (Wire Range)		尺寸 (Size)(mm)						Q' ty/reel	备注 Note
		mm <sup>2</sup>	AWG#	D	E	W1	W2	L1	L2		
SF187-KM-12	B	ALL SIZE		3.0	8.0	5.8	2.5	12.0	13.0	2000PCS	
SF187-KM-13		0.5-1.5	20-16	3.0	8.0	5.8	2.5	13.0	13.0	2000PCS	
SF187-KM-14		0.5-1.5	20-16	3.0	8.0	5.8	2.5	14.0	13.0	2000PCS	RU
SF187-KM-16		0.5-1.5	20-16	3.0	8.0	5.8	2.5	16.0	17.0	2000PCS	

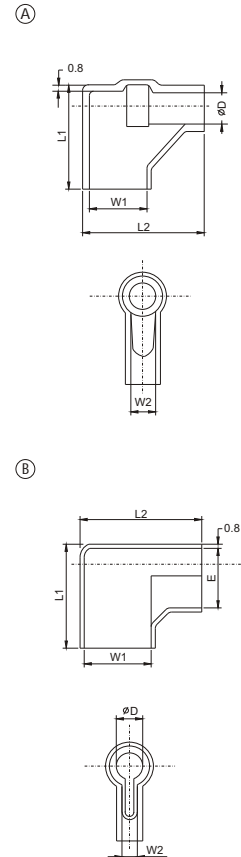
205 旗形护套

型号 (Part No.)	图号 Type	适用电线范围 (Wire Range)		尺寸 (Size)(mm)					Q' ty/reel	备注 Note
		mm <sup>2</sup>	AWG#	D	W1	W2	L1	L2		
SF205-35-16	A	0.75-2.5	18-14	3.5	6.3	3.0	16.0	15.0	2000PCS	
SF205-KM-16	B	ALL SIZE		3.2	6.3	3.0	16.0	15.0	2000PCS	

250 旗形护套

型号 (Part No.)	图号 Type	适用电线范围 (Wire Range)		尺寸 (Size)(mm)						Q' ty/reel	备注 Note
		mm <sup>2</sup>	AWG#	D	E	W1	W2	L1	L2		
SF250-30-14	A	0.75-1.5	18-16	3.0	9.0	8.0	3.5	14.0	16.0	2000PCS	
SF250-30-17		0.75-1.5	18-16	3.0	9.0	8.0	3.5	17.0	16.0	2000PCS	RU
SF250-30-18		0.75-1.5	18-16	3.0	9.0	8.0	3.5	18.0	16.0	2000PCS	
SF250-35-16		1.5-2.5	16-14	3.5	9.0	8.0	3.5	16.0	16.0	2000PCS	
SF250-35-17		1.5-2.5	16-14	3.5	9.0	8.0	3.5	17.0	16.0	2000PCS	
SF250-40-17		14-12 or 20+18		4.0	9.0	8.0	3.5	17.0	16.0	2000PCS	RU
SF250-50-17		14-10 or 18+16		5.0	9.0	8.0	3.5	17.0	16.0	2000PCS	

型号 (Part No.)	图号 Type	适用电线范围 (Wire Range)		尺寸 (Size)(mm)						Q' ty/reel	备注 Note
		mm <sup>2</sup>	AWG#	D	E	W1	W2	L1	L2		
SF250-KM35-17	B	ALL SIZE		3.5	10.0	8.0	3.5	17.0	12.0	2000PCS	
SF250-KM-13		0.75-1.5	18-16	4.0	10.0	8.0	4.0	13.0	12.0	2000PCS	
SF250-KM-14		0.75-1.5	18-16	4.0	10.0	8.0	4.0	14.0	12.0	2000PCS	
SF250-KM-15		0.75-1.5	18-16	4.0	10.0	8.0	4.0	15.0	12.0	2000PCS	
SF250-KM-16		0.75-1.5	18-16	4.0	10.0	8.0	4.0	16.0	12.0	2000PCS	
SF250-KM-17		ALL SIZE		4.0	10.0	8.0	4.0	17.0	16.0	2000PCS	RU



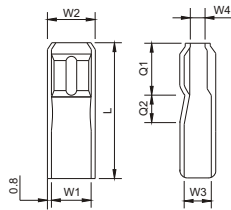


● 110 方形护套



型号 (Part No.)	图号 Type	适用电线范围 (Wire Range)		尺寸 (Size)(mm)							Q' ty/reel	备注 Note
		mm <sup>2</sup>	AWG#	W1	W2	W3	W4	Q1	Q2	L		
SS110-21	A	ALL SIZE		4.0	2.3	3.3	1.0	9.5	4.0	21.0	2000PCS	
SS110-23		ALL SIZE		4.0	3.4	3.3	1.0	9.5	4.0	23.0	2000PCS	
型号 (Part No.)	图号 Type	适用电线范围 (Wire Range)		尺寸 (Size)(mm)							Q' ty/reel	备注 Note
		mm <sup>2</sup>	AWG#	W1	W2	W3	W4	Q1	Q2	L		
SS110-S-23	B	-	-	5.5	5.5	2.6	1.0	9.0	6.5	23.0	2000PCS	

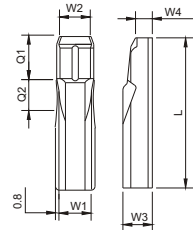
Ⓐ



● 187 方形护套

型号 (Part No.)	图号 Type	适用电线范围 (Wire Range)		尺寸 (Size)(mm)							Q' ty/reel	备注 Note
		mm <sup>2</sup>	AWG#	W1	W2	W3	W4	Q1	Q2	L		
SS187-21	A	ALL SIZE		5.7	5.6	2.5	1.1	9.0	5.0	21.0	2000PCS	
SS187-23		ALL SIZE		5.7	5.6	2.5	1.1	9.0	5.0	23.0	2000PCS	
SS187-24		ALL SIZE		5.7	5.6	2.5	1.1	9.0	5.0	24.0	2000PCS	
型号 (Part No.)	图号 Type	适用电线范围 (Wire Range)		尺寸 (Size)(mm)							Q' ty/reel	备注 Note
		mm <sup>2</sup>	AWG#	W1	W2	W3	W4	Q1	Q2	L		
SS187-S-22	B	ALL SIZE		5.7	5.8	3.2	1.1	9.0	6.8	22.0	2000PCS	
SS187-S-23		ALL SIZE		5.7	5.8	3.2	1.1	9.0	6.8	23.0	2000PCS	
SS187-S-24		ALL SIZE		5.7	5.8	3.2	1.1	9.0	6.8	24.0	2000PCS	

Ⓑ



● 205 方形护套

型号 (Part No.)	图号 Type	适用电线范围 (Wire Range)		尺寸 (Size)(mm)							Q' ty/reel	备注 Note
		mm <sup>2</sup>	AWG#	W1	W2	W3	W4	Q1	Q2	L		
SS205-22	A	ALL SIZE		6.5	6.1	2.7	1.3	9.5	5.0	22.0	2000PCS	
SS205-24		ALL SIZE		6.5	6.1	2.7	1.3	9.5	5.0	24.0	2000PCS	

● 250 方形护套

型号 (Part No.)	图号 Type	适用电线范围 (Wire Range)		尺寸 (Size)(mm)							Q' ty/reel	备注 Note
		mm <sup>2</sup>	AWG#	W1	W2	W3	W4	Q1	Q2	L		
SS250-25	A	ALL SIZE		7.9	7.9	3.0	1.3	10.5	5.5	26.0	2000PCS	
SS250-26		ALL SIZE		7.9	7.9	3.0	1.3	10.5	5.5	25.0	2000PCS	
SS250-27		ALL SIZE		7.1	7.9	3.0	1.3	10.5	5.5	27.0	2000PCS	
型号 (Part No.)	图号 Type	适用电线范围 (Wire Range)		尺寸 (Size)(mm)							Q' ty/reel	备注 Note
		mm <sup>2</sup>	AWG#	W1	W2	W3	W4	Q1	Q2	L		
SS250-S-27	B	ALL SIZE		8.0	7.6	3.7	3.7	10.5	7.3	27.0	2000PCS	
SS250-S-26		ALL SIZE		8.0	7.6	3.7	3.7	10.5	7.3	26.0	2000PCS	

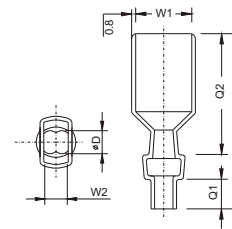


● 250 “W” 口直径护套 OTHER RULER SLEEVE

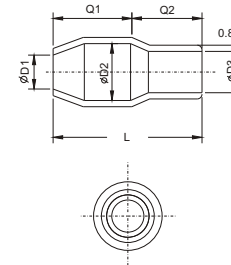


型号 (Part No.)	图号 Type	适用电线范围 (Wire Range)		尺寸 (Size)(mm)						Q' ty/reel	备注 Note
		mm <sup>2</sup>	AWG#	D	W1	W2	Q1	Q2	L		
SRW250-32-26	A	18+18		3.2	7.8	3.3	6.0	17.0	26.0	2000PCS	
SRW250-35-18		16+16		3.2	7.8	3.3	5.5	17.0	27.0	2000PCS	
SRW250-35-26		16+16		3.5	7.8	3.3	6.0	17.0	26.0	2000PCS	
SRW250-39-26		14+14		3.9	7.8	3.3	6.0	17.0	26.0	2000PCS	
SRW250-39-27		14+14		3.9	8.0	3.5	5.5	17.0	27.0	2000PCS	

Ⓐ



Ⓑ



● “·” 帽形护套 “V” TYPE OF CAP SLEEVE

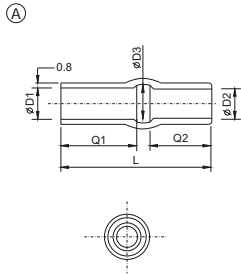
型号 (Part No.)	图号 Type	适用电线范围 (Wire Range)		尺寸 (Size)(mm)						Q' ty/reel
		mm <sup>2</sup>	AWG#	D	W1	W2	Q1	Q2	L	
SV223-28-13	B	0.5-0.75	20-18	2.8	3.3	3.1	6.0	7.0	13.0	2000PCS
SV223-33-14		0.75-1.5	18-16	3.3	4.2	3.5	7.0	7.0	14.0	2000PCS
SV223-35-14		1.5-2.5	16-14	3.5	4.4	3.7	7.0	7.0	14.0	2000PCS
SV223-37-16		2.5-4.0	14-12	3.7	4.7	4.0	8.0	8.0	16.0	2000PCS
SV223-40-16		2.5-4.0	14-12	4.0	4.9	4.0	8.0	8.0	16.0	2000PCS
SV223-47-17		4.0-6.0	12-10	4.7	5.5	4.3	9.0	8.0	17.0	2000PCS
SV223-52-18		4.0-6.0	12-10	5.2	6.3	5.5	9.0	9.0	18.0	2000PCS
SV223-62-19		4.0-6.0	12-10	6.2	7.2	6.2	10.0	9.0	19.0	2000PCS



子弹形插头护套



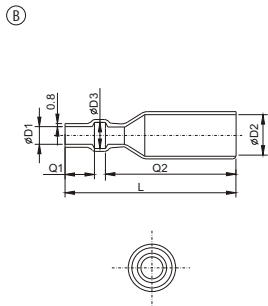
型号 (Part No.)	图号 Type	适用电线范围 (Wire Range)		尺寸 (Size)(mm)						Q' ty/reel
		mm <sup>2</sup>	AWG#	D	W1	W2	Q1	Q2	L	
SB211-25-14	A	0.3-0.75	22-18	2.5	3.0	3.6	6.5	5.0	14.0	2000PCS
SB211-28-14		0.5-0.75	20-18	2.8	3.2	3.7	6.5	5.0	14.0	2000PCS
SB211-30-14		0.75-1.5	18-16	3.0	3.0	3.6	6.5	5.0	14.0	2000PCS
SB211-32-14		0.75-1.5	18-16	3.2	3.2	4.1	6.5	5.0	14.0	2000PCS
SB211-35-14		1.5-2.5	16-14	3.5	3.5	4.2	6.5	5.0	14.0	2000PCS
SB211-40-14		14-12 or 20+18		4.0	4.0	4.6	6.5	5.0	14.0	2000PCS



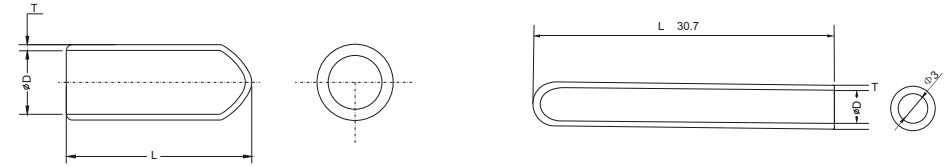
子弹形插座护套



型号 (Part No.)	图号 Type	适用电线范围 (Wire Range)		尺寸 (Size)(mm)						Q' ty/reel
		mm <sup>2</sup>	AWG#	D	W1	W2	Q1	Q2	L	
SB221-25-27	B	0.3-0.75	22-18	2.5	5.0	4.5	7.0	17.5	27.0	2000PCS
SB221-30-27		0.75-1.5	18-16	3.0	5.0	4.5	7.0	17.5	27.0	2000PCS
SB221-32-27		0.75-1.5	18-16	3.2	5.0	4.5	7.0	17.5	27.0	2000PCS
SB221-35-27		1.5-2.5	16-14	3.5	5.0	4.5	7.0	17.5	27.0	2000PCS
SB221-25-34		0.3-0.75	22-18	2.5	5.0	4.5	7.0	24.5	34.0	2000PCS
SB221-30-34		0.75-1.5	18-16	3.0	5.0	4.5	7.0	24.5	34.0	2000PCS
SB221-32-34		0.75-1.5	18-16	3.2	5.0	4.5	7.0	24.5	34.0	2000PCS
SB221-35-34		1.5-2.5	16-14	3.5	5.0	4.5	7.0	24.5	34.0	2000PCS
SB221-40-34		14-12 or 20+18		4.0	5.0	4.5	7.0	24.5	34.0	2000PCS
SB222-25-26		0.3-0.75	22-18	2.5	7.5	4.5	5.0	18.5	26.0	2000PCS
SB222-35-26		1.5-2.5	16-14	3.5	7.5	4.5	5.0	18.5	26.0	2000PCS



管形帽护套

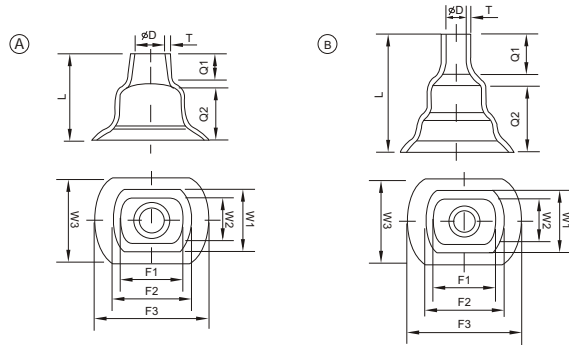


型号 (Part No)	尺寸 (Size) (mm)			Q' ty/bag
	D	L	T	
SU224-20-15	2.0	15	0.8	2000PCS
SU224-25-15	2.5	15	0.8	2000PCS
SU224-30-15	3.0	15	0.8	2000PCS
SU224-35-15	3.5	15	0.8	2000PCS
SU224-40-15	4.0	15	0.8	2000PCS
SU224-45-15	4.5	15	0.8	2000PCS
SU224-50-15	5.0	15	0.8	2000PCS
SU224-55-15	5.5	15	0.8	2000PCS
SU224-60-15	6.0	15	0.8	2000PCS
SU224-65-15	6.5	15	0.8	2000PCS
SU224-70-15	7.0	15	0.8	2000PCS
SU224-75-15	7.5	15	0.8	2000PCS
SU224-80-15	8.0	15	0.8	2000PCS
SU224-85-15	8.5	15	1.0	2000PCS
SU224-90-15	9.0	15	1.0	2000PCS
SU224-95-15	9.5	15	1.0	2000PCS
SU224-100-20	10.0	20.0	1.0	2000PCS
SU224-105-20	10.5	20.0	1.0	2000PCS
SU224-110-20	11.0	20.0	1.0	2000PCS
SU224-115-20	11.5	20.0	1.0	2000PCS
SU224-120-20	12.0	20.0	1.2	2000PCS
SU224-125-20	12.5	20.0	1.2	2000PCS
SU224-130-20	13.0	20.0	1.2	2000PCS
SU224-135-20	13.5	20.0	1.2	2000PCS
SU224-140-20	14.0	20.0	1.2	2000PCS

型号 (Part No)	尺寸 (Size) (mm)			Q' ty/bag
	D	L	T	
SU224-145-20	14.5	20.0	1.2	2000PCS
SU224-150-20	15.0	20.0	1.2	2000PCS
SU224-155-20	15.5	20.0	1.2	2000PCS
SU224-160-20	16.0	20.0	1.2	2000PCS
SU224-170-25	17.0	25.0	1.5	2000PCS
SU224-180-25	18.0	25.0	1.5	2000PCS
SU224-190-25	19.0	25.0	1.5	2000PCS
SU224-200-25	20.0	25.0	1.5	2000PCS
SU224-210-25	21.0	25.0	1.5	2000PCS
SU224-220-25	22.0	25.0	1.5	2000PCS
SU224-230-25	23.0	25.0	1.5	2000PCS
SU224-240-25	24.0	25.0	1.5	2000PCS
SU224-250-25	25.0	25.0	1.5	2000PCS
SU224-260-30	26.0	30.0	1.5	2000PCS
SU224-270-30	27.0	30.0	1.5	2000PCS
SU224-280-30	28.0	30.0	1.5	2000PCS
SU224-300-30	30.0	30.0	1.5	2000PCS
SU224-320-30	32.0	30.0	1.5	2000PCS
SU224-340-40	34.0	40.0	1.5	2000PCS
SU224-360-40	36.0	40.0	1.5	2000PCS
SU224-380-40	38.0	40.0	2.0	2000PCS
SU224-400-40	40.0	40.0	2.0	2000PCS
SU224-420-40	42.0	40.0	2.0	2000PCS
SU225-30-31	3.0	30.7	1.0	2000PCS
SU225-40-32	4.0	32.0	1.0	2000PCS

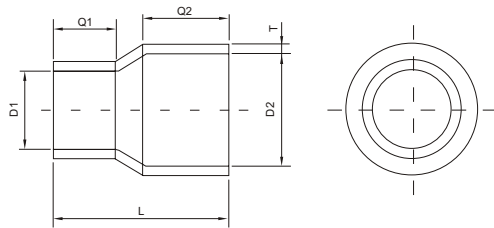


塔形护套系列 PAGODA SLEEVE



型号 (Part No.)	尺寸 (Size)(mm)											图号 Type	Q' ty/bag
	D	W1	W2	W3	F1	F2	F3	Q1	Q2	L	T		
SP801-1	13.0	18.3	24.5	30.0	25.0	40.8	46.1	14.4	48.6	65.2	2.0	A	100PCS
SP401-1	9.5	20.3	13.1	34.0	19.3	28.5	42.7	20.6	35.1	58.3	1.8	B	100PCS
SP601-1	9.6	22.3	15.6	35.3	21.7	30.7	43.8	27.3	39.0	64.4	1.8		100PCS
SP901-1	13.0	25.1	20.7	35.9	19.2	31.7	48.0	30.2	52.1	84.2	1.8		100PCS

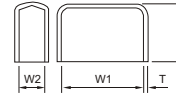
瓶形护套系列 CRUSE SLEEVE



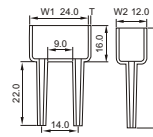
型号 (Part No.)	尺寸 (Size)(mm)						Q' ty/bag
	D1	D2	Q1	Q2	L	T	
SCA130-09-26.5	9.0	13.0	10.2	12.7	26.5	1.2	2000PCS
SCA150-11-27.5	11.0	15.0	11.0	13.4	26.5	1.2	2000PCS
SCA150-11-37	11.0	15.0	21.5	12.6	37.0	1.2	2000PCS



保险丝管护套 MALE TERMINAL SERIES

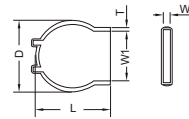


型号 (Part No.)	图号 Pic.	适用电线范围 (Wire Range)		尺寸 (Size)(mm)				Q' ty/reel
		mm <sup>2</sup>	AWG#	W1	W2	L	T	
SBX185-13	A	-	-	19.6	5.7	12.7	1.0	2000PCS

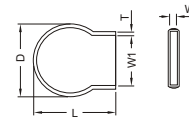


型号 (Part No.)	图号 Pic.	适用电线范围 (Wire Range)		尺寸 (Size)(mm)				Q' ty/reel
		mm <sup>2</sup>	AWG#	W1	W2	L	T	
SBX185-13	B	-	-	24.0	12.0	38.0	1.0	2000PCS

压敏电阻护套 RESISTOR SLEEVE



型号 (Part No.)	适用电线范围 (Wire Range)		图号 Type	尺寸 (Size)(mm)					Q' ty/reel
	mm <sup>2</sup>	AWG#		D	W1	W2	L	T	
SDZ158-43-21.5	-	-	A	19.8	11.5	4.3	21.5	1.0	2000PCS



型号 (Part No.)	适用电线范围 (Wire Range)		图号 Type	尺寸 (Size)(mm)					Q' ty/reel
	mm <sup>2</sup>	AWG#		D	W1	W2	L	T	
SDZ150-40-17.5	-	-	B	19.0	12.0	6.0	17.5	1.0	2000PCS

保护罩



型号 (Part No.)	尺寸 (Size)(mm)							
	D1	D2	D3	W1	W2	W3	L	T
SP511-1	4.6	10.5	3.0	8.5	1.5	3.8	19	0.8
SP512-1	6.0	13.5	4.2	8.5	2.2	4.0	22	0.9
SP514-1	11.5	23.5	9.7	10.2	2.7	4.5	22.5	0.9

